

Kestrel Webinar Dress Rehearsal 2



Introduction

Dress Rehearsal 2 aims to build on the strong foundations established through the recent Dress Rehearsal 1 by:

- Opening Kestrel functionality to allow the Baseline Schedule to be viewed by all of industry
- Giving all of industry sight into key Migration reporting outputs, including planned vs actual Migration volumes, using simulated data

Dress Rehearsal 2 represents a shift from Dress Rehearsal 1 in that it will be relevant to all participants, not just Suppliers.

Dress Rehearsal 2 will demonstrate that Kestrel can support key reporting requirements. Specifically;

- **Plan vs Actual Outturn** and
- **Aggregated Outturn Reports** and
- ensure these reports are accessible to participants.

Introduction

Updated Approach:

The original approach saw incremental tests being released to participants over the 6-week period. We identified that this created unnecessary effort for participants and to streamline the process, we have condensed and focused the testing to a 3-week window.

Revised Testing Window:

- **Start:** 11 August 2025
- **End:** 29 August 2025

Report Examples and Test Scripts:

We recognise that participants will be eager to view reports to support internal development and processes.

As such we will be issuing the report schemas on the 21st July to all participants before testing start on the **11th August**.

21 July 2025	Report schemas by example published to all participants
4 August 2025	Dress Rehearsal 2 Test scripts issued to participants
11 August 2025	Dress Rehearsal 2 begins
29 August 2025	Dress Rehearsal 2 concludes

Introduction

Phase Specific Entry and Exit Criteria

DRH 2

Entry

- ✓ Successful completion of DRH 1
- ✓ DIP integration configured
- **Simulated** DIP Migration outturn data for SIT participants
- **Simulated** test data for SIT participants for sprint execution

Exit

- SIT Suppliers can Download and view **simulated** Committed Baseline Schedule
- SIT Suppliers can access **simulated** Daily Plan vs Actual Outturn reports
- All market participants can access relevant aggregate Baseline Schedules
- All market participants can access relevant **simulated** aggregate progress reports

DRH 1

Entry

- ✓ Successful completion of Submission 2 exit criteria
- ✓ Test data prepared for validation scenarios

Exit

- ✓ All Suppliers can view validation results
- ✓ Validation feedback mechanisms verified
- ✓ All Suppliers can access baselined plans (online or via email)

Submission 2

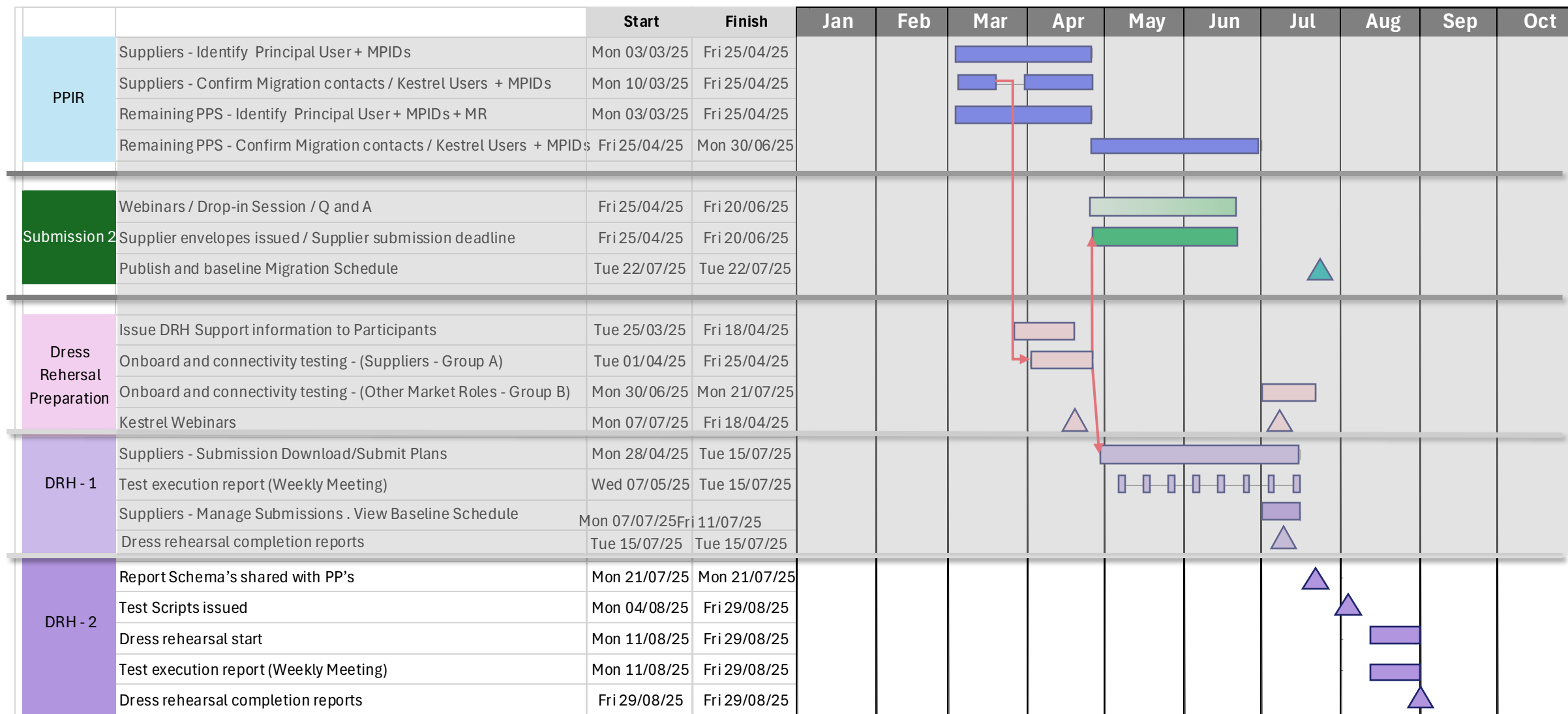
Entry

- ✓ All Supplier users onboarded with MHHS accounts
- ✓ Supplier Group MPID mappings validated
- ✓ Migration Planners registered and mapped to correct Supplier Group MPIDs

Exit

- ✓ 100% of Suppliers can access supplier portal
- ✓ 100% of Suppliers can download/upload submission templates
- ✓ 95%+ MPAN coverage in submitted Migration Plans

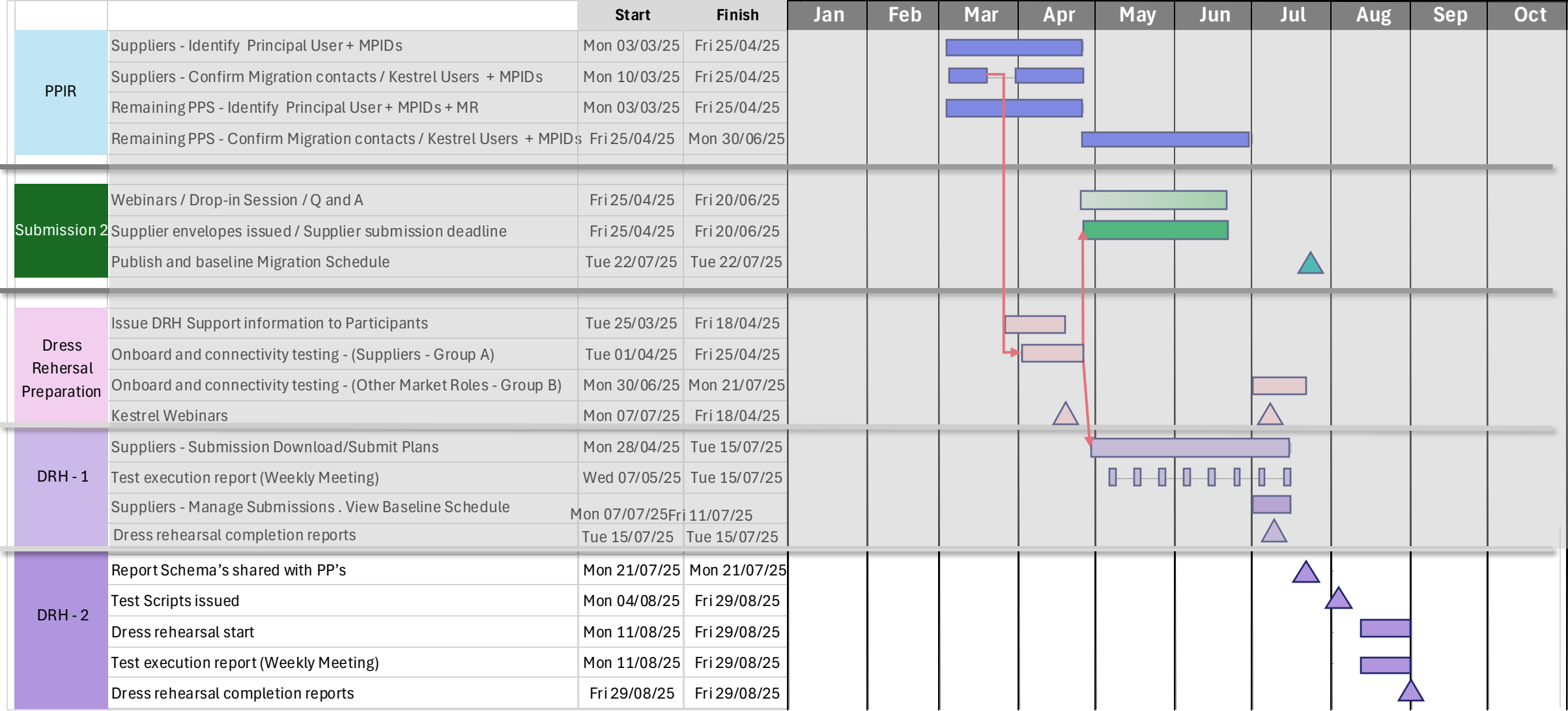
Preparation, and Dress Rehearsals - POAP



Dress Rehearsal 2



Dress Rehearsals & Test Plan - POAP



Participation Matrix

Test Strategy

Participation Indicator

Mandatory	✓
Mandatory SIT Agents	☑
Optional (preferred)	●
Optional	○
Not Applicable	-

*Other Stakeholders include:

- LDSOs
- DCC
- Code Bodies
- MHHS Programme
- OFGEM
- Agents
- NESO

Phase	Activity	SIT Suppliers	Wave 1 and 2 Suppliers	Wave 3 and 4 Suppliers	Other Stakeholders*
Preparation	User Registration via PPIR	✓	✓	✓	✓
	Confirm Group MPID	✓	✓	✓	✓
	Confirm Migration Start Date	✓	✓	✓	☑
Submission 2	Portal Access	✓	✓	✓	○
	Download Templates	✓	✓	✓	-
	Submit Migration Plans	✓	✓	✓	-
DRH 1	Portal Access	✓	●	●	○
	Plan Validation Testing	✓	●	●	-
	Access Baselined Schedule	✓	●	○	-
DRH 2	Portal Access	✓	✓	✓	✓
	Sprint Execution View	✓	-	-	-
	Daily Plan vs Actual Outturn Reports - Supplier	✓	-	-	-
	Unused Capacity Requests	-	-	-	-
	Agent Demand Submission	-	-	-	-
	Aggregate Outturn Reports	-	-	-	✓
	View Synthetic Committed/Forecast Templates/Plans	✓	●	●	- 8

Scope

The testing scope will vary depending on your market role and qualification wave.

DRH 2 will utilise synthetic data and will operate from the perspective of an individual supplier actively migration within an Execution phase of a Sprint.

SIT Suppliers:

For SIT Suppliers, the migration team will be using their Weekly Granularity Migration Plans from Submission 2 to create a synthetic Daily Granularity Migration Plan. This will then become the **Committed Baseline** that the Execution Plan vs Actual reports will be taken from.

- The main objective for SIT Suppliers is to download and view their Committed Baseline Schedule and view the Daily Outturn reports (Plan vs Actual).

Non-SIT Suppliers:

View and familiarise with combined plans. Committed and Forecast template.

All other PP's:

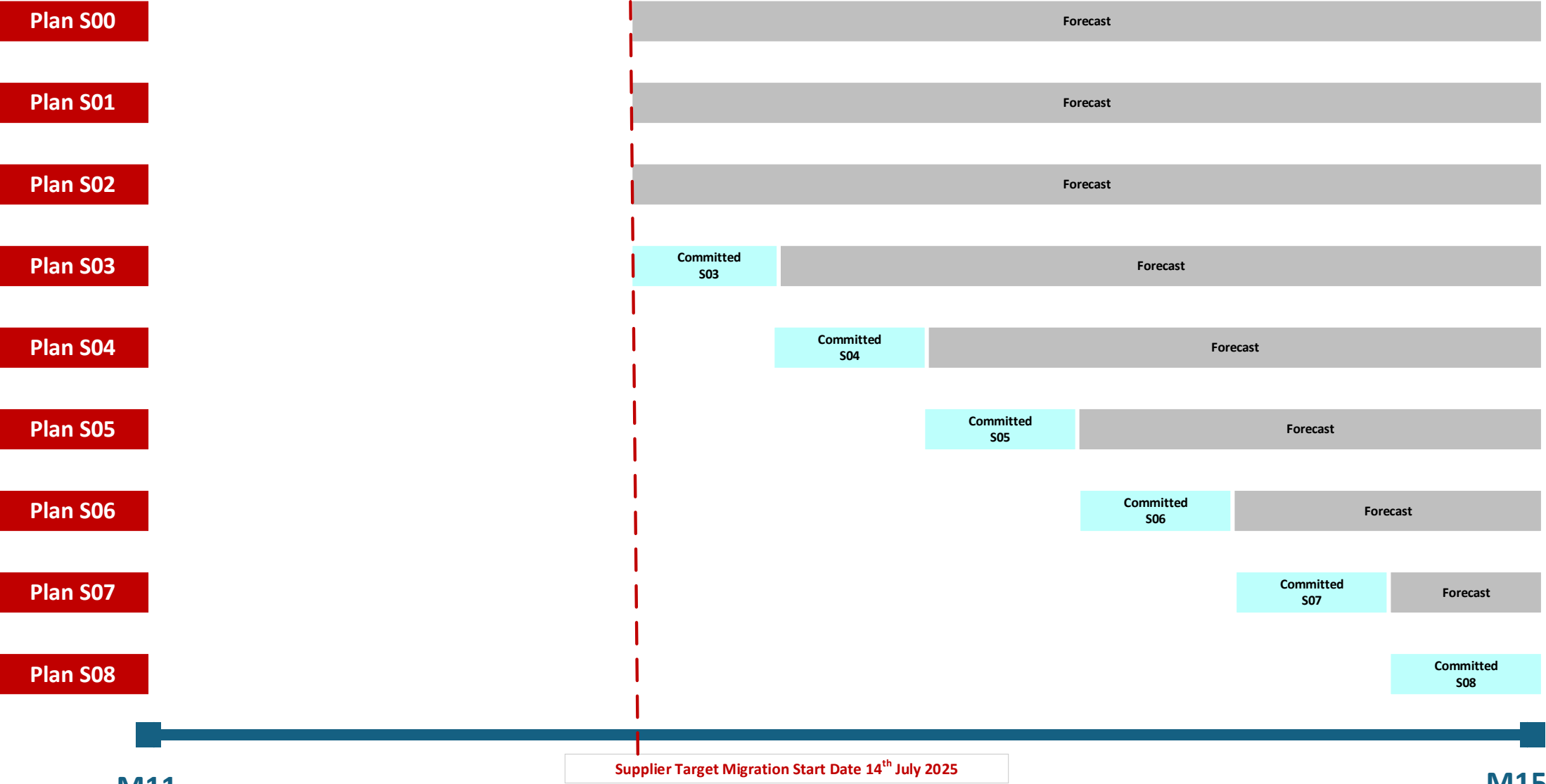
For all other PP's, you will now be able to download and view an aggregated version of the Forecast / Committed Baseline Schedule – this will provide you with a weekly granularity view of migrations to be completed across the 18-month window. You will also be able to view the aggregated Daily Plan vs Actual reports from the Sprints Execution.

Supplier Submission Template Granularity Options

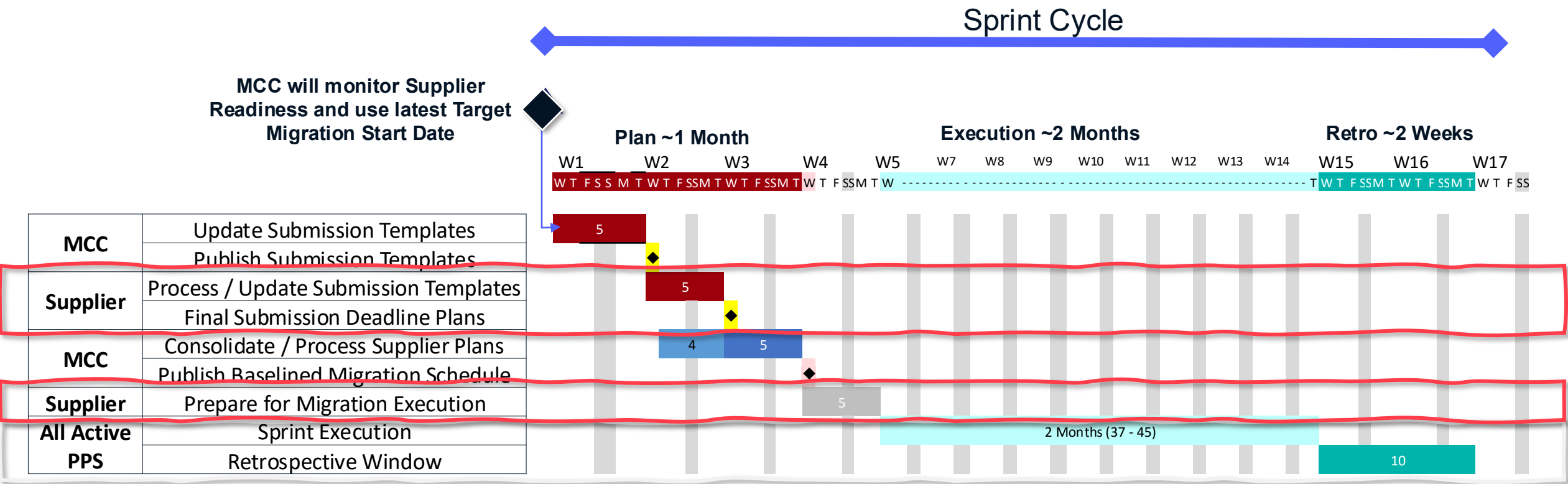
Coverage: All Submission templates/plans cover from:
 Migration Start Date → M15 (or starts from next Sprint start if already migrating)

Submission Template/Plan Type	Migration Status	Period Covered	Submission Type	Granularity
Combined Granularity - Standard Template (Default)	1) Not Started As per Submission 2	Entire Supplier Migration Migration Start Date → M15	Forecast	Weekly
	2) Started / Actively Migrating	Next Sprint Execution Period Up to (2 months)	Committed	Daily
		Remainder	Forecast	Weekly
Daily ONLY Granularity (Requires OPT in from Supplier)	1) Not Started As per Submission 2	Entire Supplier Migration Migration Start Date → M15	Forecast	Daily
	2) Started / Actively Migrating	Next Sprint Execution Period Up to (2 months)	Committed	Daily
		Remainder	Forecast	Daily

Reference Example of Suppler Plans Submission Requirements (Committed vs Forecast Submissions)



Single Sprint Cycle - Timeline Overview



Kestrel Product Roadmap – Features

Submission 2

Core Supplier Functions

- ✓ Secure login with MHHS credentials
- ✓ Download and upload migration plans
- ✓ Basic file validation
- ✓ View supplier profile and LDSO data

Dress Rehearsal 1

Expanded Supplier Capabilities

- ✓ Detailed submission rule validation
- ✓ Enhanced validation feedback
- ✓ View migration contacts
- Bulk change of agent request process (offline process) – Descoped from Dress Rehearsal 1
- ✓ Access forecast baselined schedules online

Dress Rehearsal 2

SIT Supplier Specific

- Simulated Sprint execution features
- Access synthetic Committed Baseline Schedule
- Simulated Plan vs Actual outturn Reports

All PP's Market-Wide Reporting

- Access baselined schedules (Aggregate views)
- Simulated Aggregate outturn reports (sanitised)

Sprint Cycle 0 (Plans for M11 onwards)

Additional Features

- Live migration tracking
- Actual migration outturn reporting
- Bulk change of agent request process
- Full sprint cycle management active
- Migration issue management (TBC)
- Operational support services
- Unused Capacity Reporting
- Agent Demand Reporting

Core Services

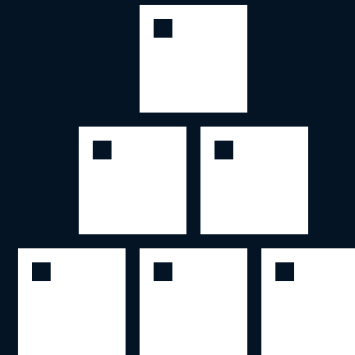
MCC Administration

- User management
- Submission template generation
- Supplier Plan Management and tracking
- Parameter management and versioning

Support Features

- User guides
- Training webinars
- FAQ
- Drop-in sessions

Kestrel Demo



Reports - Dress Rehearsal 2 Reports

RP-05 Supplier Submitted Migrations Plan vs Actual Migration Outturn

Description: Comparison of submitted daily migration plans for sprint execution versus actual migration initiations and completion messages

Consumer:

1. Supplier
2. DCC
3. Registration Service / LDSO

RP-04 Migration Message / Transaction Summary

Description: Aggregate views of IF31 initiated versus IF36 completed. Summary views of all related migration message submissions.

Consumer:

1. Supplier
2. DCC
3. Central Services
4. Registration Service / LDSO

RP-03 Aggregate Migrated MPAN Distribution by LDSO

Description: Aggregate view of the distribution of MPANs between LDSOs. List of suppliers with portfolios by LDSO.

Consumer:

1. Registration Service / LDSO
2. Central Services
3. Suppliers

RP-05 Supplier Submitted Migrations Plan vs Actual Migration Outturn

Header Fields – Primary Information

Date	DoW	D_Num	Sprint_ID	Is FastFeedback Day	Velocity_Period	Is Migration Day	Supplier_MPID
22/10/2025	Wed	1	0	1	01-IRU	1	ZZAA

Rows – IF-031s by LDSO vs Baselined Plan for MCA

Provided from Submission			DIP Acutals		DI-000	DI-800	DI-830	Derived	DI-833	Derived
Distributor Short Code	LDSO_MPID	Baseline_Approved_Subm_Vol	Actual_Subm_Vol	Baseline_Actual_Diff	Interface Id	Service Provider Appointment Scenario	Proposed MS EffectiveFrom Date	MS Migration Activation Offset (Working Days)	Proposed DS Effective From Date	MS Migration Activation Offset (Working Days)
10EELC		10	10		0IF-031	MCA (Migration Change of Agent)	29/10/2025	5	29/10/2025	5
11EMEB		1	0		-1IF-031	MCA (Migration Change of Agent)	29/10/2025	5	29/10/2025	5
27ETCL		5	4		-1IF-031	MCA (Migration Change of Agent)	29/10/2025	5	29/10/2025	5
35FEAL		10	11		1IF-031	MCA (Migration Change of Agent)	29/10/2025	5	29/10/2025	5
37FORB		100	105		5IF-031	MCA (Migration Change of Agent)	29/10/2025	5	29/10/2025	5
33GGEN		1000	1000		0IF-031	MCA (Migration Change of Agent)	29/10/2025	5	29/10/2025	5
26GUCL		20	20		0IF-031	MCA (Migration Change of Agent)	29/10/2025	5	29/10/2025	5
29HARL		40	40		0IF-031	MCA (Migration Change of Agent)	29/10/2025	5	29/10/2025	5
17HYDE		50	50		0IF-031	MCA (Migration Change of Agent)	29/10/2025	5	29/10/2025	5
10EELC		10	10		0IF-031	MCA (Migration Change of Agent)	24/10/2025	2	24/10/2025	2
11EMEB		1	0		-1IF-031	MCA (Migration Change of Agent)	24/10/2025	2	24/10/2025	2

Rows – IF-031s by LDSO vs Baselined Plan for MCS

Distributor Short Code	LDSO_MPID	Baseline_Approved_Subm_Vol	Actual_Subm_Vol	Baseline_Actual_Diff	Interface Id	Service Provider Appointment Scenario	Proposed MS EffectiveFrom Date	MS Migration Activation Offset (Working Days)	Proposed DS Effective From Date	MS Migration Activation Offset (Working Days)
10EELC	N/A	10	N/A		IF-031	MCS (Migration Change of Supplier)	24/10/2025	2	24/10/2025	2
11EMEB	N/A	0	N/A		IF-031	MCS (Migration Change of Supplier)	29/10/2025	5	29/10/2025	5
27ETCL	N/A	0	N/A		IF-031	MCS (Migration Change of Supplier)	29/10/2025	5	29/10/2025	5

RP-04 Migration Message / Transaction Summary (IF-031 with IF-036 Completions)

Header Fields – Primary Information

IF-036 Appointment Date	IF-031 Initiation Date	DoW	D_Num	Sprint_ID	Is FastFeedback Day	Velocity_Period	Is Migration Day	Supplier_MPID
29/10/2025	22/10/2025	Wed	1	0	1	01-IRU	1	ZZAA

Rows – IF-036s by LDSO vs IF-031s initiated for MCA

Provided from Submission		DIP Actuals			DI-000	DI-800	DI-824	Derived	DI-827	Derived
Distributor Short Code	LDSO_MPID	Baseline_Approved_Subm_Vol	Actual_Subm_Vol	Baseline_Actual_Diff	Interface Id	Service Provider Appointment Scenario	Incoming MS Effective From Date	MS Migration Activation Offset (Working Days)	Incoming Data Service Effective From Date	MS Migration Activation Offset (Working Days)
10 EELC		10	10		0IF-036	MCA (Migration Change of Agent)	29/10/2025	5	29/10/2025	5
11 EMEB		1	0		-1IF-036	MCA (Migration Change of Agent)	29/10/2025	5	29/10/2025	5
27 ETCL		5	4		-1IF-036	MCA (Migration Change of Agent)	29/10/2025	5	29/10/2025	5
35 FEAL		10	11		1IF-036	MCA (Migration Change of Agent)	29/10/2025	5	29/10/2025	5
37 FORB		100	105		5IF-036	MCA (Migration Change of Agent)	29/10/2025	5	29/10/2025	5
33 GGEN		1000	1000		0IF-036	MCA (Migration Change of Agent)	29/10/2025	5	29/10/2025	5
26 GUCL		20	20		0IF-036	MCA (Migration Change of Agent)	29/10/2025	5	29/10/2025	5
29 HARL		40	40		0IF-036	MCA (Migration Change of Agent)	29/10/2025	5	29/10/2025	5
17 HYDE		50	50		0IF-036	MCA (Migration Change of Agent)	29/10/2025	5	29/10/2025	5
10 EELC		10	10		0IF-036	MCA (Migration Change of Agent)	24/10/2025	2	24/10/2025	2
11 EMEB		1	0		-1IF-036	MCA (Migration Change of Agent)	24/10/2025	2	24/10/2025	2

RP-03 Aggregate Migrated MPAN Distribution by LDSO

TBD

Participation Matrix

Participation Indicator

Mandatory	✓
Mandatory SIT Agents	☑
Optional (preferred)	●
Optional	○
Not Applicable	-

*Other Stakeholders include:

- LDSOs
- DCC
- Code Bodies
- MHHS Programme
- OFGEM
- Agents
- NESO

Phase	Activity	SIT Suppliers	Wave 1 and 2 Suppliers	Wave 3 and 4 Suppliers	Other Stakeholders*
Preparation	User Registration via PPIR	✓	✓	✓	✓
	Confirm Group MPID	✓	✓	✓	✓
	Confirm Migration Start Date	✓	✓	✓	☑
Submission 2	Portal Access	✓	✓	✓	○
	Download Templates	✓	✓	✓	-
	Submit Migration Plans	✓	✓	✓	-
DRH 1 DRH 2	Portal Access	✓	●	●	○
	Plan Validation Testing	✓	●	●	-
	Access Baselined Schedule	✓	●	○	-
	Portal Access	✓	✓	○	✓
	Sprint Execution View	✓	●	○	-
	Migration Progress Reports	✓	●	○	✓
	Unused Capacity Requests	✓	●	○	-
	Agent Demand Submission	✓	●	○	-
	Access Aggregate Reports	-	-	-	✓