



**MHHS
PROGRAMME**
Industry-led, Elexon facilitated

Deep Dive: Unmetered

26 August 2022

MHHS-DEL[xxx]

Version 1 SI Design Assurance Team

Session Overview

Approach

- We will use the Design Playback Deep Dives to provide a lower level of detail on the specific topics
- Our Design Subject Matter Experts will take 60-90 minutes to discuss the topics, as well as fielding any questions or comments

Purpose

- Today's session will cover changes relating to Unmetered sites
- We will also respond to any questions, comments or queries you may have

Outcomes

- By the end of today's session, you will have:
 - A better understanding of changes relating to Unmetered sites
 - An opportunity to have any questions, comments or queries answered

Outputs

- We will issue the slide pack and a link to the recording for this session
- All questions submitted on Slido and asked in person will be logged and the answers transcribed and edited for comprehension
- These will also be issued to all attendees

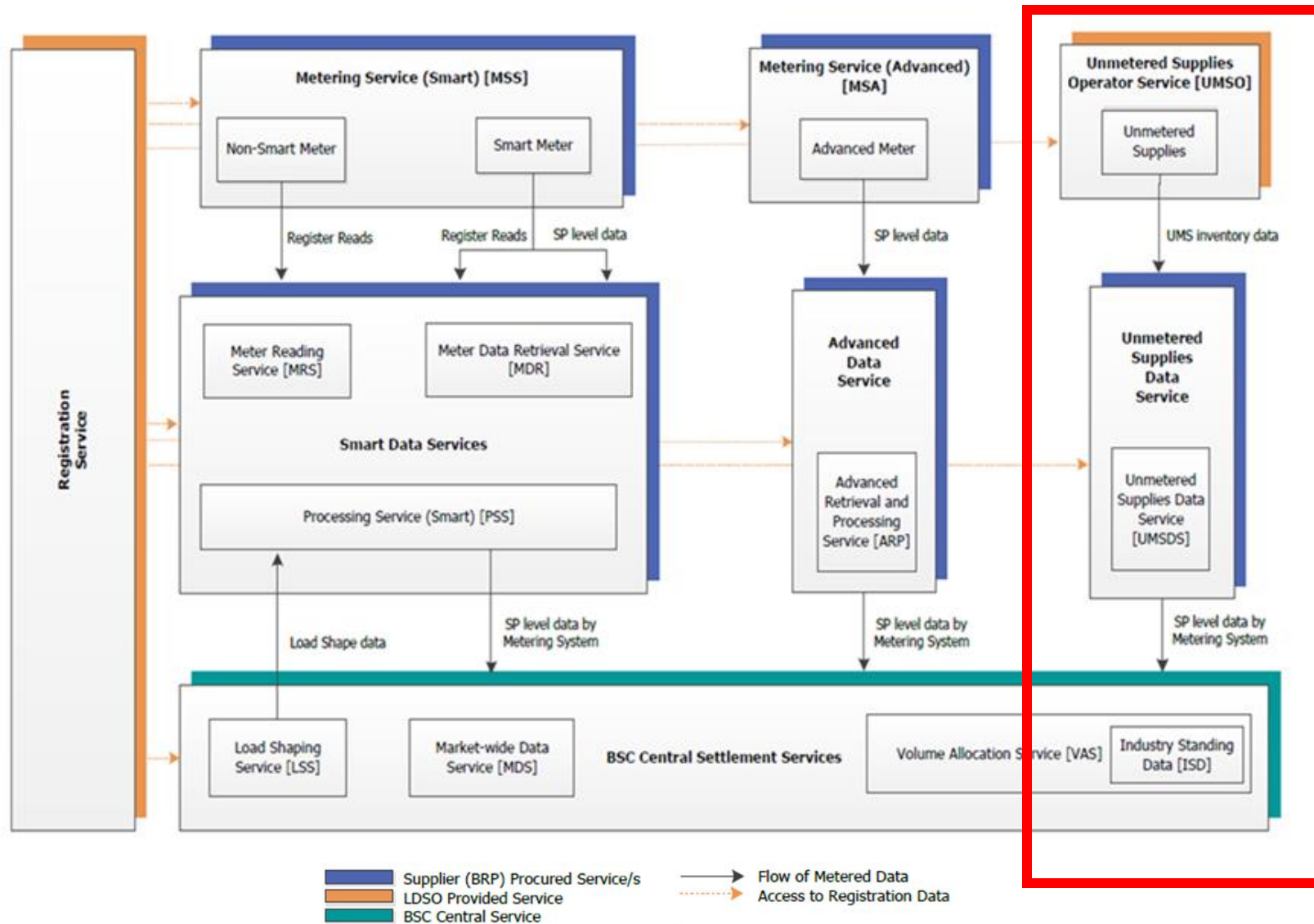
Slido and Rules of Engagement

- Some questions have been submitted in advance to drive the initial discussion
- Additional questions can be submitted at Slido.com with the code below, or raise your hand on Teams, the facilitator will handle sequencing
- Subject discussions are timeboxed to fifteen minutes to allow breadth of subjects to be discussed

UMS Session Content

Today's Deep Dive will cover the following topics:

- MHHS TOM Overview for UMS
- Establishing a UMS Inventory
- Data Collection
- Industry Standing Data
- Data Processing using an Equivalent Meter
- UMS Interfaces
- ECS Reporting
- Operational Choreography



The UMS Customer will provide the inventory of UMS Apparatus to the Unmetered Supplies Operator using the Standard File format set out in the Operational Information Document:

<https://www.elexon.co.uk/documents/training-guidance/bsc-guidance-notes/operational-information-document/>

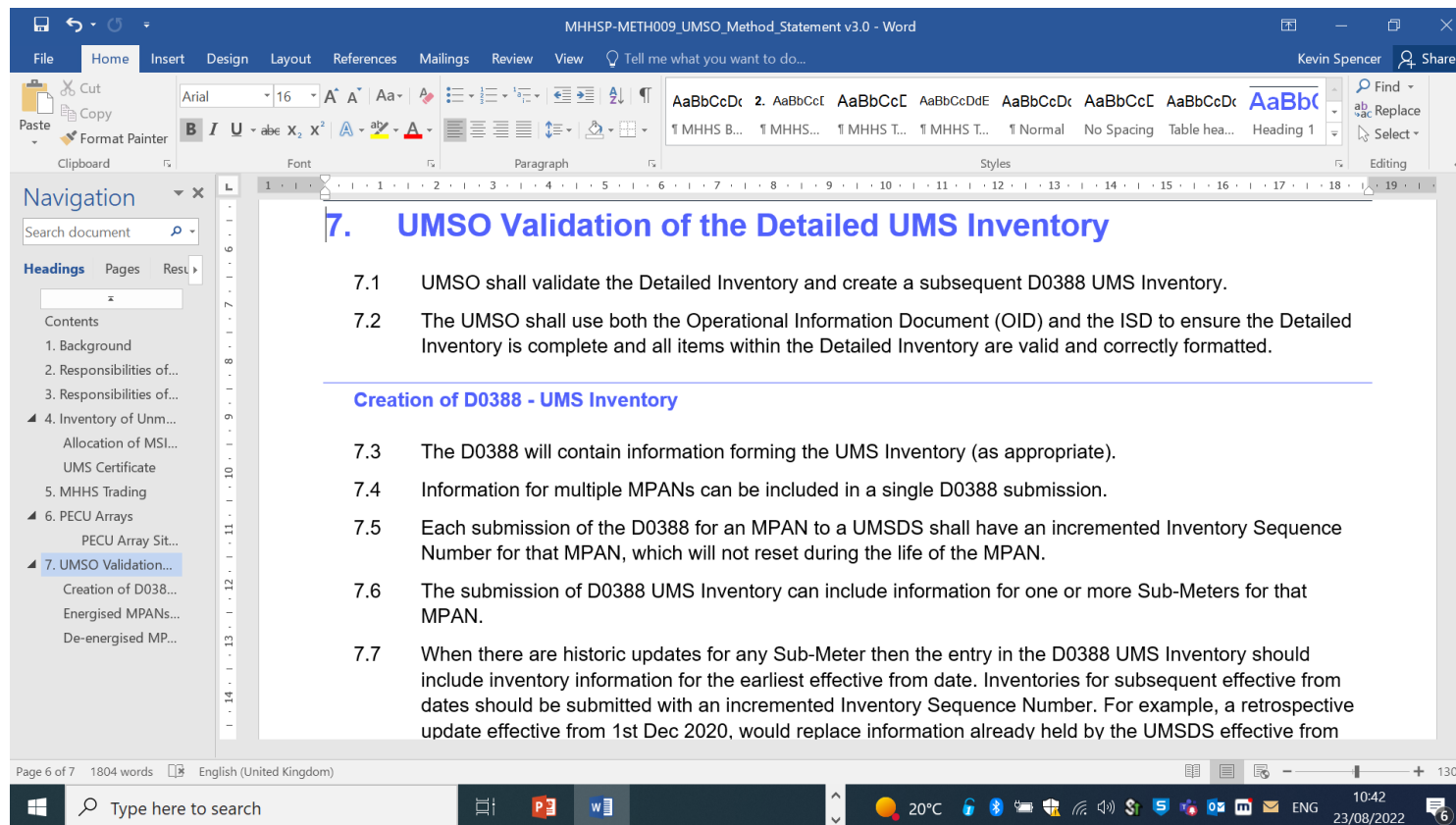
A Guide to Unmetered Supplies Under the BSC

8.2 Standard file format

Field No.	Name	Details Required	Type	Length	Start Position	Finish Position
1	Road Reference	e.g. Ordnance Survey Number	Text	8	1	8
2	Town, Parish, District		Text	30	9	38
3	Road Name		Text	30	39	68
4	Location		Text	20	69	88
5	Unit Type	Identifies the record as a lamp or a sign, etc. B = bollard; F = school crossing flashers; L = street light; M = miscellaneous; P = pillar; R = Refuge Beacon; S = sign light; T = traffic signal equip; Z = Belisha Beacon (Zebra)	Text	1	89	89

The UMISO must validate the customer inventory against the OID and Industry Standing Data. Details are set out in:

MHHSP-METH009_UMSO_Method_Statement v3.0



The UMISO must provide the UMS Inventory to the Unmetered Supplies Data Service using the D0388 'UMS Inventory'

The UMSDS Processes are set out in MHHSP-METH004_UMSDS_EM_Functionsv3.0

Group	Item	Requirement	Status
GP1 MPAN Cores	J0003 MPAN Core	1-*	<input checked="" type="checkbox"/>
	J2267 Inventory Sequence Number		<input checked="" type="checkbox"/>
	J2279 Effective from Date (UMS)		<input checked="" type="checkbox"/>
GP2 UMS Sub-Meter	J2271 UMS Sub-Meter	1-*	<input checked="" type="checkbox"/>
	J2277 CMS Indicator		<input checked="" type="checkbox"/>
GP3 Non-CMS	J2272 Switch Regime	If non-CMS 1-*	<input checked="" type="checkbox"/>
	J2276 Charge Code		<input type="checkbox"/>
	J2268 Number of Items		<input type="checkbox"/>
GP4 CMS	J2278 CMS Unit Reference	If CMS	<input checked="" type="checkbox"/>

Need help?
Chat with us!

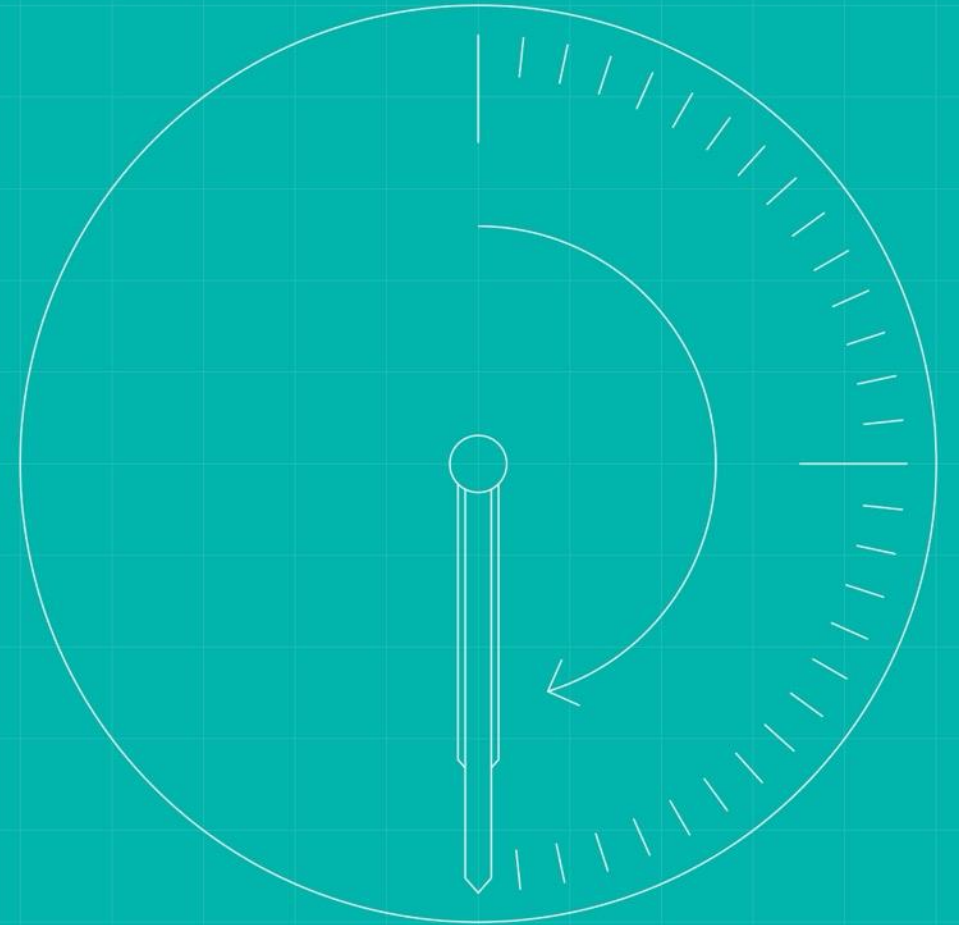
The UMSDS must validate the UMS Inventory provided by the UMISO using the D0388 'UMS Inventory' and provide a UMS response to the UMISO if any issues are identified using the D0389

The UMSDS Processes are set out in MHHSP-METH004_UMSDS_EM_Functionsv3.0

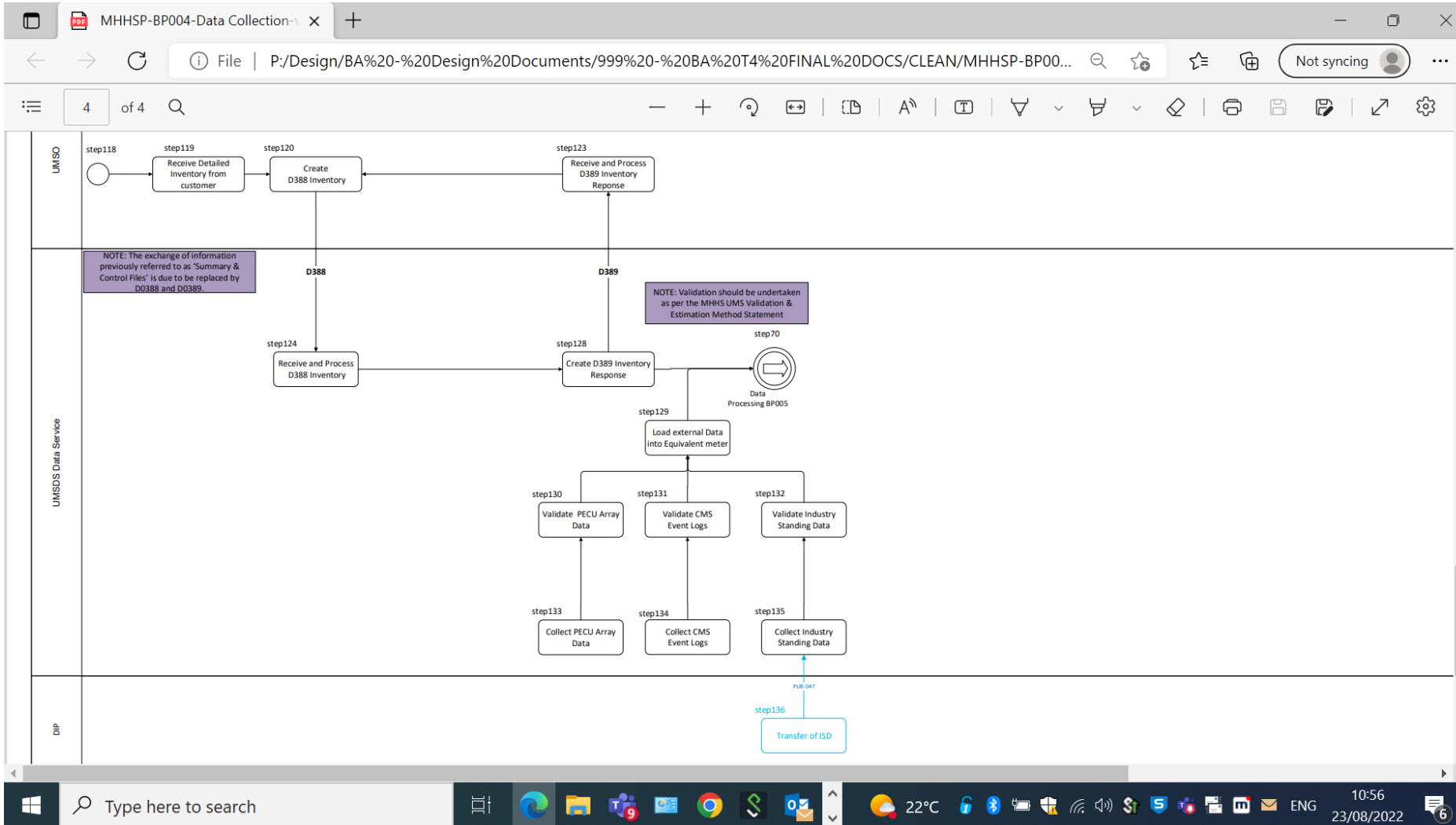
L1	L2	L3	L4	L5	L6	L7	L8	Condition	Range	Required	Actions	
RP1	MPAN Cores									1-*		^
	J0003	MPAN Core									<input checked="" type="checkbox"/>	
	J2267	Inventory Sequence Number									<input checked="" type="checkbox"/>	
	J2269	Response Reason Code									<input checked="" type="checkbox"/>	
RP2	Invalid Charge Code								If Response Reason Code = G	1-*		^
	J2270	UMS Error Code									<input checked="" type="checkbox"/>	
	J2272	Switch Regime									<input type="checkbox"/>	
	J2276	Charge Code									<input type="checkbox"/>	
	J2278	CMS Unit Reference									<input type="checkbox"/>	

Need help? Chat with us!

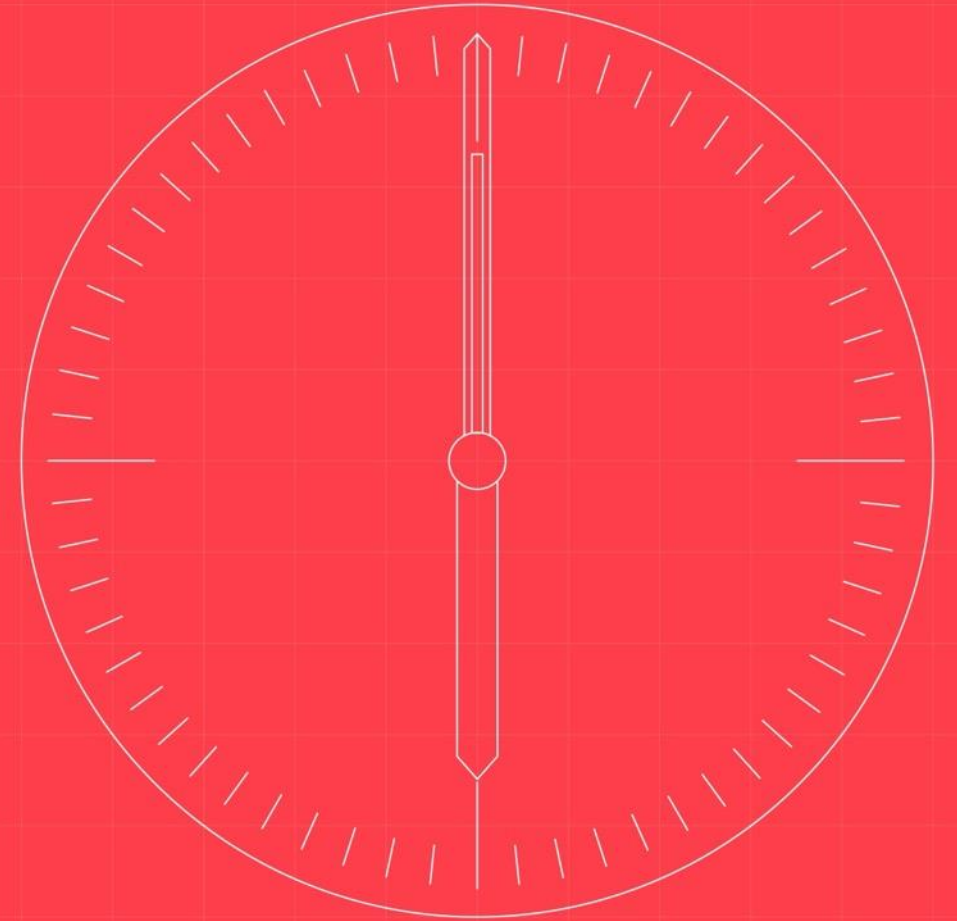
Data Collection



The Data Collection processes are set out in MHHSP-BP004-Data Collection-v3.0



Industry Standing Data



The Industry Standing data for unmetered supplies will be provided in five new ISD Entities as set out in MHHSP_EDI021_ISD_Entities v3.0:

ISD Entity Id M9 - Unmetered Supplies Charge Codes

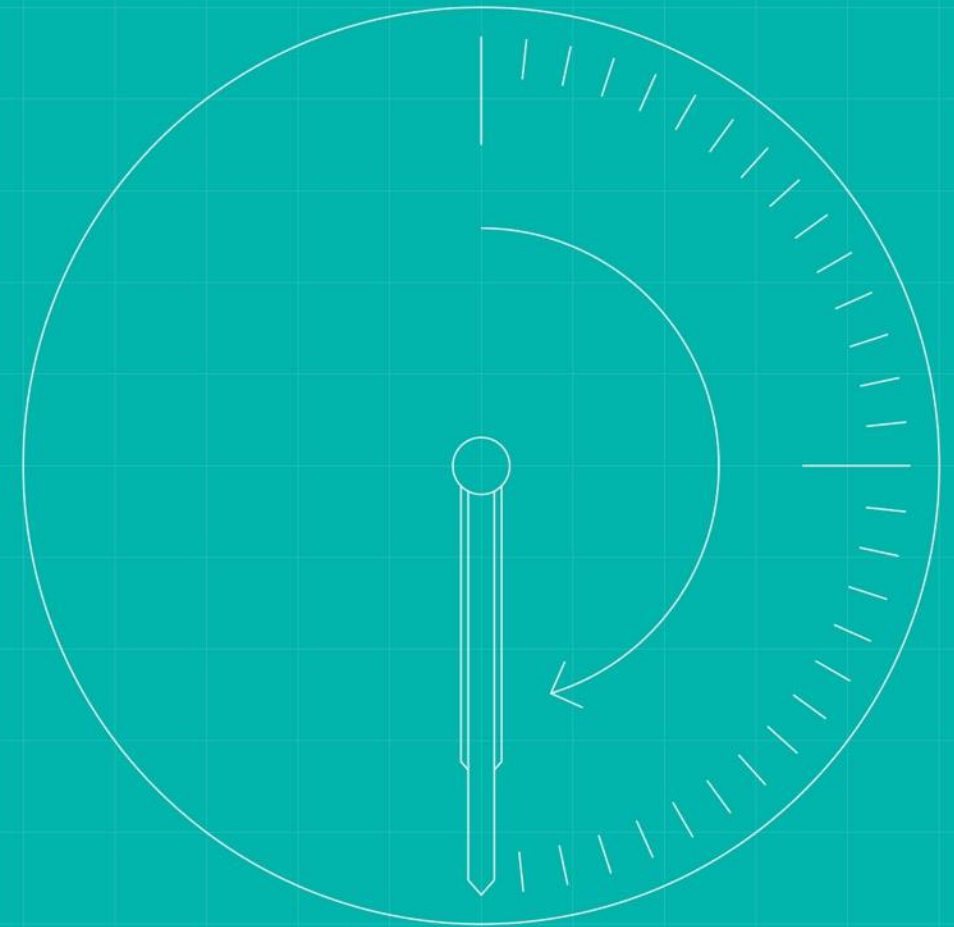
ISD Entity Id M10 - Manufacturer Equipment LED Range Charge Codes

ISD Entity Id M11 - Unmetered Supplies Switch Regimes

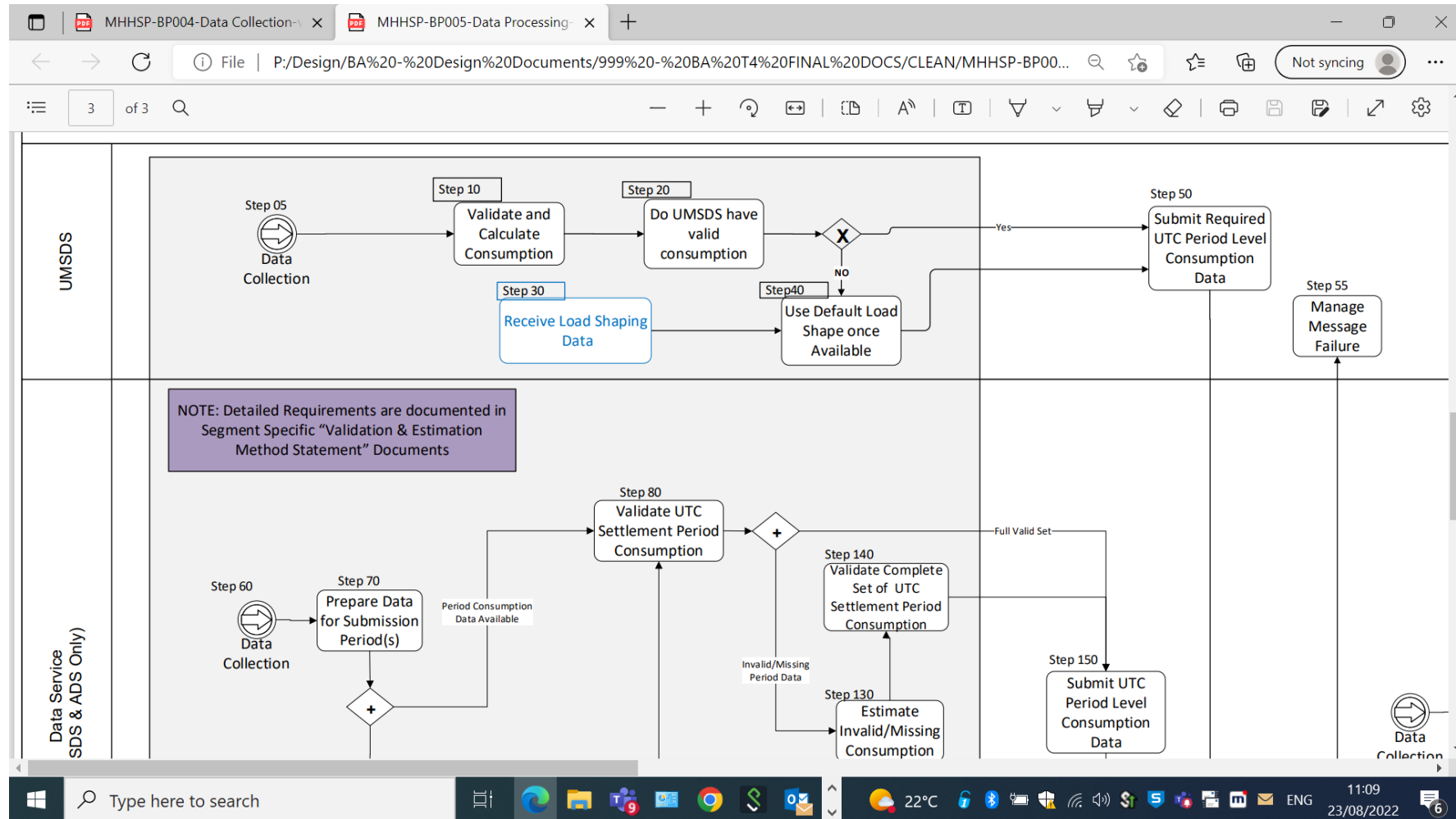
ISD Entity Id M12 - Unmetered Supplies Variable Power Switch Regimes

ISD Entity Id M13 - Unmetered Supplies Highway Message Sign and Indicator Sign Operating Hours

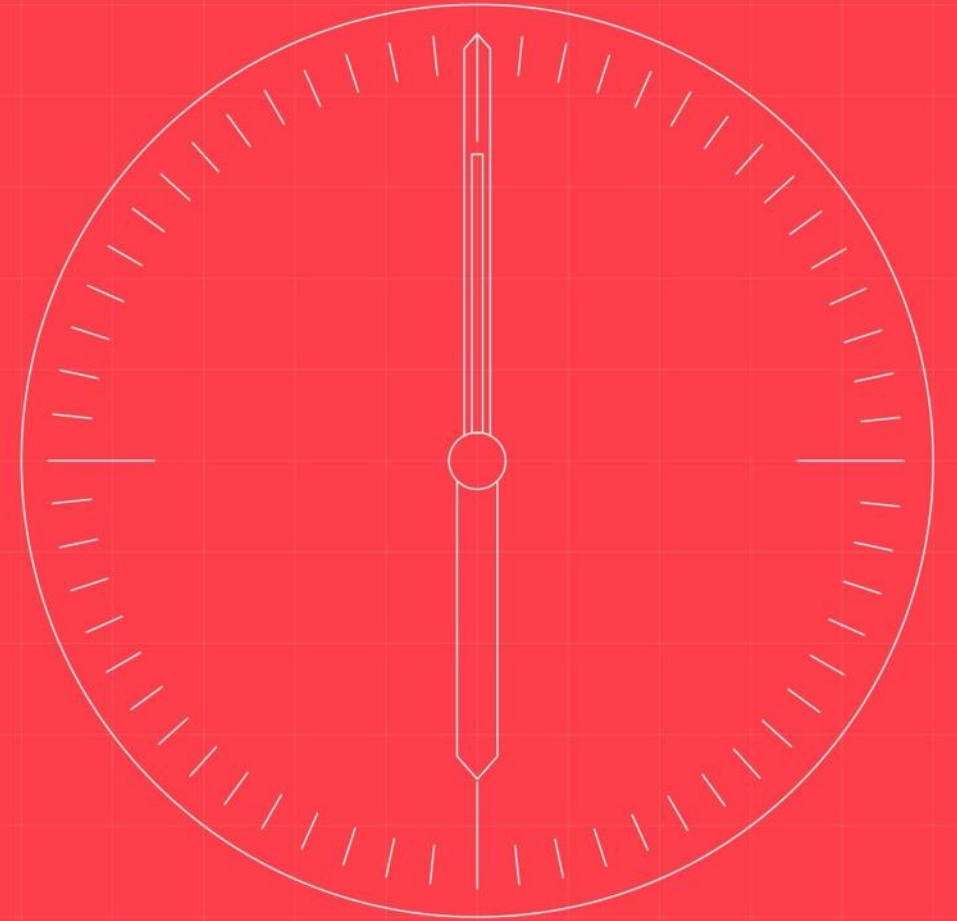
Data Processing using an Equivalent Meter



Data Processing is set out in MHHSP-BP005-Data Processing-v3.0 and the functions of the Equivalent Meter are set out in MHHSP-METH004_UMSDS_EM_Functionsv3.0



- UMS Interfaces



All the MHHS DIP Interfaces are set out in MHHSP DES138 Interface Catalogue_v0_3 the main ones for UMS are as follows:

[MHHSP-IF-033](#) Registration Service Request for Service Appointment
Appointment Request sent from Registration Service to Service Provider for Approval / Rejection.

[MHHSP-IF-008](#) Registration Service Notification of Change of Energisation Status Registration Service
notification of Change of Energisation Status [back to] MS & other parties

[MHHSP-IF-021](#) UTC Settlement Period Consumption Data Transmission of SP Consumption Data from
Data Service to Settlements

ECS Reporting

Once the Settlement Calculations have been completed several reports will be provided by ELEXON Central Systems. The format of the reports can be found in MHHSP - ERI011B - ECS Reports - External v3.0

The key DIP reports containing UMS data are:

REPORT ID	Interface ID	Interface Name	From	To
MHHS-REP-002	MHHS-IF-115	LDSO report for DUoS – aggregated data	Market-wide Data Service	Licenced Distribution System Operators
	MHHS-IF-120	LDSO report for DUoS – aggregated data	Market-wide Data Service	Licenced Distribution System Operators
	MHHS-IF-125	Supplier report for DUoS – aggregated data	Market-wide Data Service	Suppliers
MHHS-REP-003	MHHS-IF-140	BM Unit Allocated Demand Volumes to Market Participants	Volume Allocation Service	Market Participants
MHHS-REP-004	MHHS-IF-150	Supplier Deemed Take Report	Volume Allocation Service	Suppliers
MHHS-REP-006	MHHS-IF-175	Aggregated Uncorrected volumes by CCC to Market Participants	Market-wide Data Service	Market Participants

A number of DTN report will also be provided. The format of the reports can be found in MHHSP - ERI011B - ECS Reports - External v3.0

The key DTN reports containing UMS data are:

REPORT ID	Interface ID	Interface Name	From	To
MHHS-REP-D0081	MHHS-IF-D0081	D0081 Supplier Half Hourly Demand Report	Volume Allocation Service	Suppliers
MHHS-REP-D0296	MHHS-IF-D0296	D0296 Supplier BM Unit Report	Volume Allocation Service	Suppliers
MHHS-REP-D0266	MHHS-IF-D0266	D0266 Supplier Header Report	Volume Allocation Service	Suppliers
MHHS-REP-D0369	MHHS-IF-D0369	D0369 Aggregated Disconnected DUoS Report	Volume Allocation Service	LDSOs and Suppliers
MHHS-REP-D0370	MHHS-IF-D0370	D0370 Supplier Half Hourly Demand Disconnection Report	Volume Allocation Service	Suppliers
MHHS-REP-D0374	MHHS-IF-D0374	D0374 Supplier BM Unit Demand Disconnection Report	Volume Allocation Service	Suppliers
MHHS-REP-D0373	MHHS-IF-D0373	D0373 GSP Group Demand Disconnection Totals Report	Volume Allocation Service	Suppliers

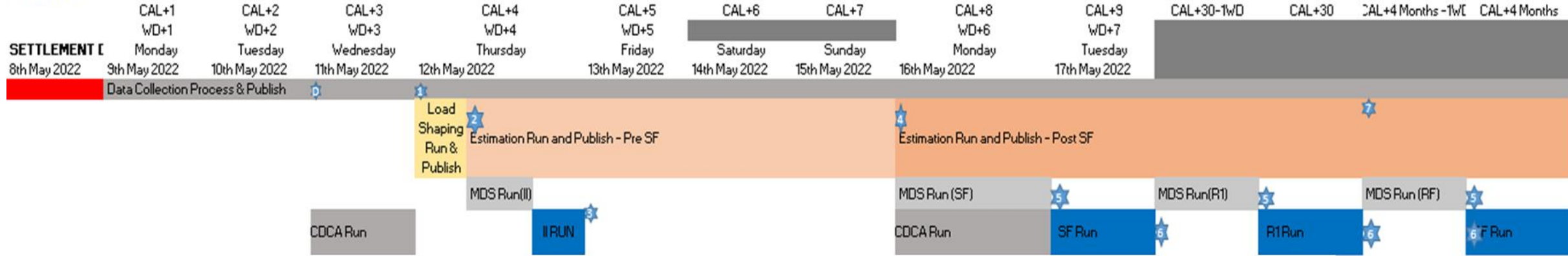
The Operational Choreography can be found in MHHSP_OC001_Operational_Choreography v1.0

This document defines any timing constraints for the operation of the MHHS business processes where they differ from the current arrangements.

It identifies the impact of changes to Settlement Timeline informed by the processing and publication of Half Hourly consumption data provided by the Advanced Data Service, Unmetered Data Service and Smart Data Service.

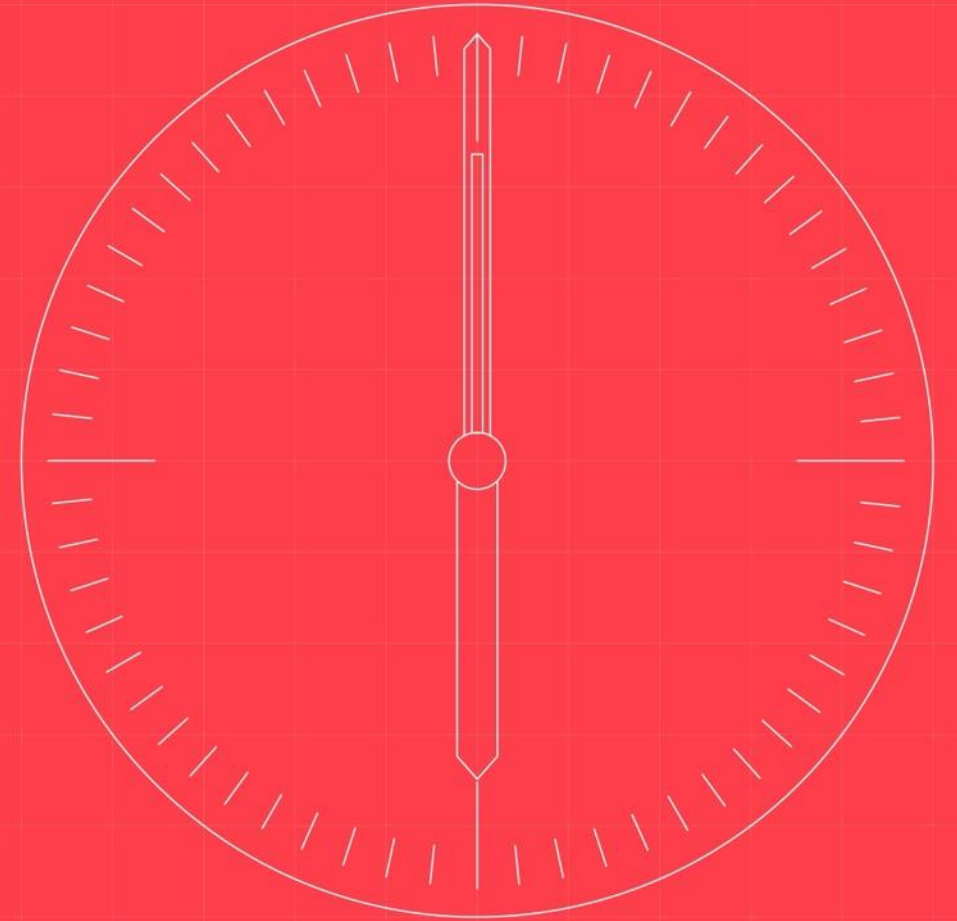
Constraints are also driven by the requirement for ECS services to consume and process Half-Hourly consumption data ahead of data aggregation and settlement processing and volume allocation

Example 1



- SDS to collect and publish consumption data via IF-21 immediately following D
- ADS to collect and publish consumption data via IF-21 immediately following D
- UMS to publish appropriate sets of consumption data on a daily basis
- Load shaping process will incorporate all consumption data received by 00:00 on WD+4
- Load Shape will have been processed and published by 12:00 on CAL+4
- MDS Run and II Run will have been completed with associated notifications by 17:00 on WD+4
- Pre-SF Best Estimates will have been generated and published by Data Services by 00:00 on WD+6
- MDS Runs to complete by 17:00
- Settlement Runs to have been completed with associated notifications by 17:00
- All actual consumption and best estimates to be provided by CAL+4 Months -1 WD

Operational Choreography





**MHHS
PROGRAMME**
Industry-led, Elexon facilitated

Any questions?
Please join at [Slido.com](https://www.slido.com)
#MHHS
